

MANUAL HIGH FREQUENCY DIMMERS

High frequency dimmers (plated)



Push on, push-off, with rotary dimming control.

Specification

DP1D 10VDC SB:	For one or two dimmable ballasts with 1-10VDC input
Wiring diagram:	See diagram 30 below
Loading:	Total load of ballast, lamps plus other load not more than 6 amps including fluorescent.
Dimensions:	86 x 86 x 12mm. Wall box depth 16mm

Order codes:

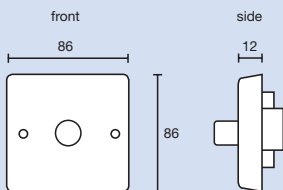
DP1D 10VDC SB
DP1D 10VDC MB
DP1D DSI

DP1D 10VDC MB:	For multiple dimmable ballasts with 1-10VDC input
Wiring diagram:	See diagram 31 below
Loading:	Total load of ballast, lamps plus other load not more than 6 amps including fluorescent. Can control up to 20mA, eg. 20 ballasts at 1mA. (Control current of ballast is usually specified at 1-10V terminals.) Varies according to make and model of ballasts
Dimensions:	86 x 86 x 12mm. Wall box depth 16mm

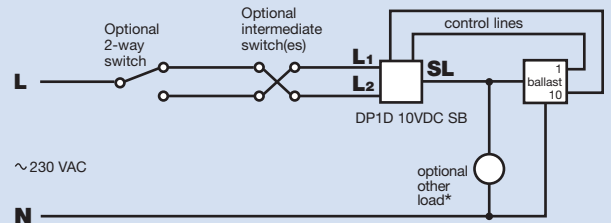
DP1D DSI:	For multiple DSI dimmable ballasts
Wiring diagram:	See diagram 32 below
Loading:	Total load of ballast, lamps plus other load not more than 6 amps including fluorescent. Can control up to 20 DSI ballasts
Dimensions:	86 x 86 x 12mm. Wall box depth 35mm.

Dimensions (in mm) and wiring diagrams

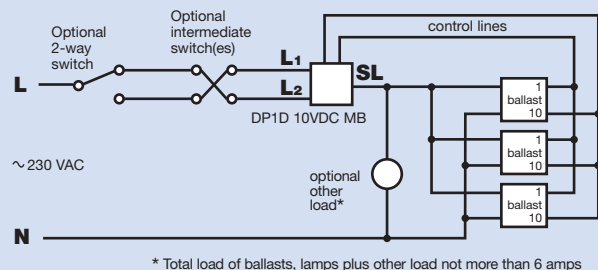
DP1D 10VDC SB, DP1D 10VDC MB, DP1D DSI



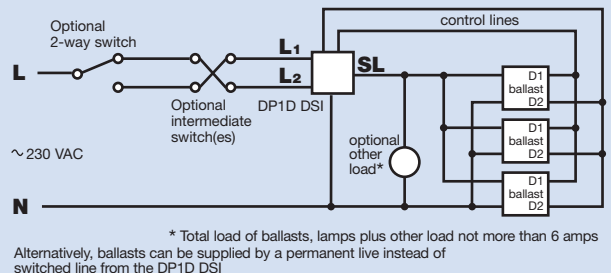
30. DP1D 10VDC SB dimming a single 1-10VDC ballast (optional multi-way switching illustrated)



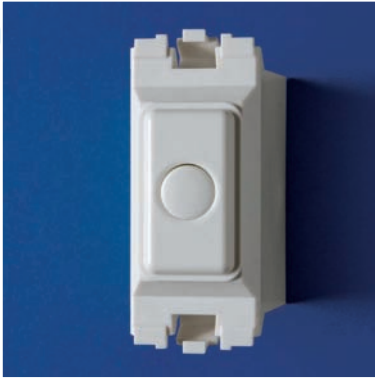
31. DP1D 10VDC MB dimming several 1-10VDC ballasts (optional multi-way switching illustrated)



32. DP1D DSI dimming several DSI ballasts (optional multi-way switching illustrated)



MANUAL HIGH FREQUENCY DIMMERS



Order codes:
DSSGD MK 10VDC

High frequency dimmers (grid modules)

Suitable for dimmable ballasts with 1-10VDC input. Push on, push off, hold to dim. Versions to suit the MK Grid Plus, Crabtree grid and Eurodata plates. They may be placed in any position on the appropriate grid or plate. They can also be operated by additional mains rated, normally open push buttons. Please call for details.

Specification

Wiring diagram:	See diagram 33 below
Loading:	Total load of ballast, lamps plus other load not more than 6 amps including fluorescent. Can control up to 20mA, eg. 20 ballasts at 1mA. Varies according to make and model of ballasts. When controlling LED drivers a load capacitor (order code CAPLOAD) may be required to augment the load
Dimensions:	Module for MK Grid Plus: 59 x 24 x 34mm. Minimum wall box depth 35mm Module for Crabtree grid: 51 x 24 x 38mm. Minimum wall box depth 40mm Module for Eurodata plates: 50 x 25 x 38mm. Minimum wall box depth 35mm

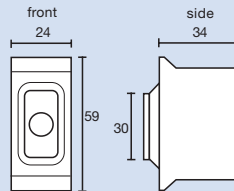


Order code:
DSSGD CB 10VDC

Dimensions (in mm) and wiring diagram

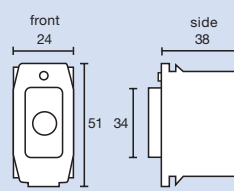
DSSGD MK 10VDC

Requires wall box depth of 35mm



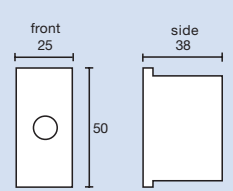
DSSGD CB 10VDC

Requires wall box depth of 40mm



DSSGD EU 10VDC

Requires wall box depth of 35mm



Order code:
DSSGD EU 10VDC

33. DSSGD MK 10VDC, DSSGD CB 10VDC or DSSGD MK 10VDC, dimming several 1-10VDC ballasts

